

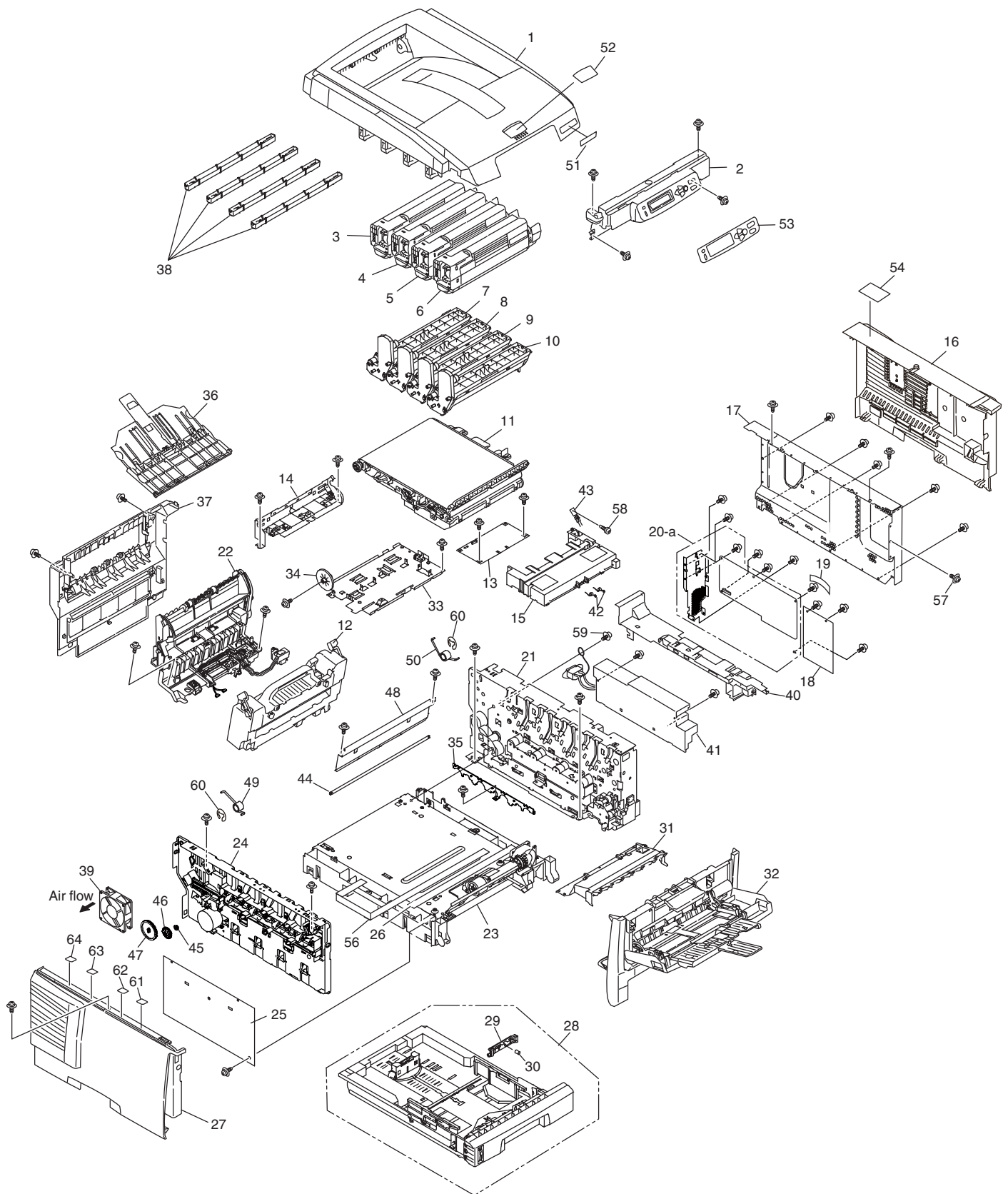
OEL Disassembly Drawing

C5650/C5750/C5850/C5950

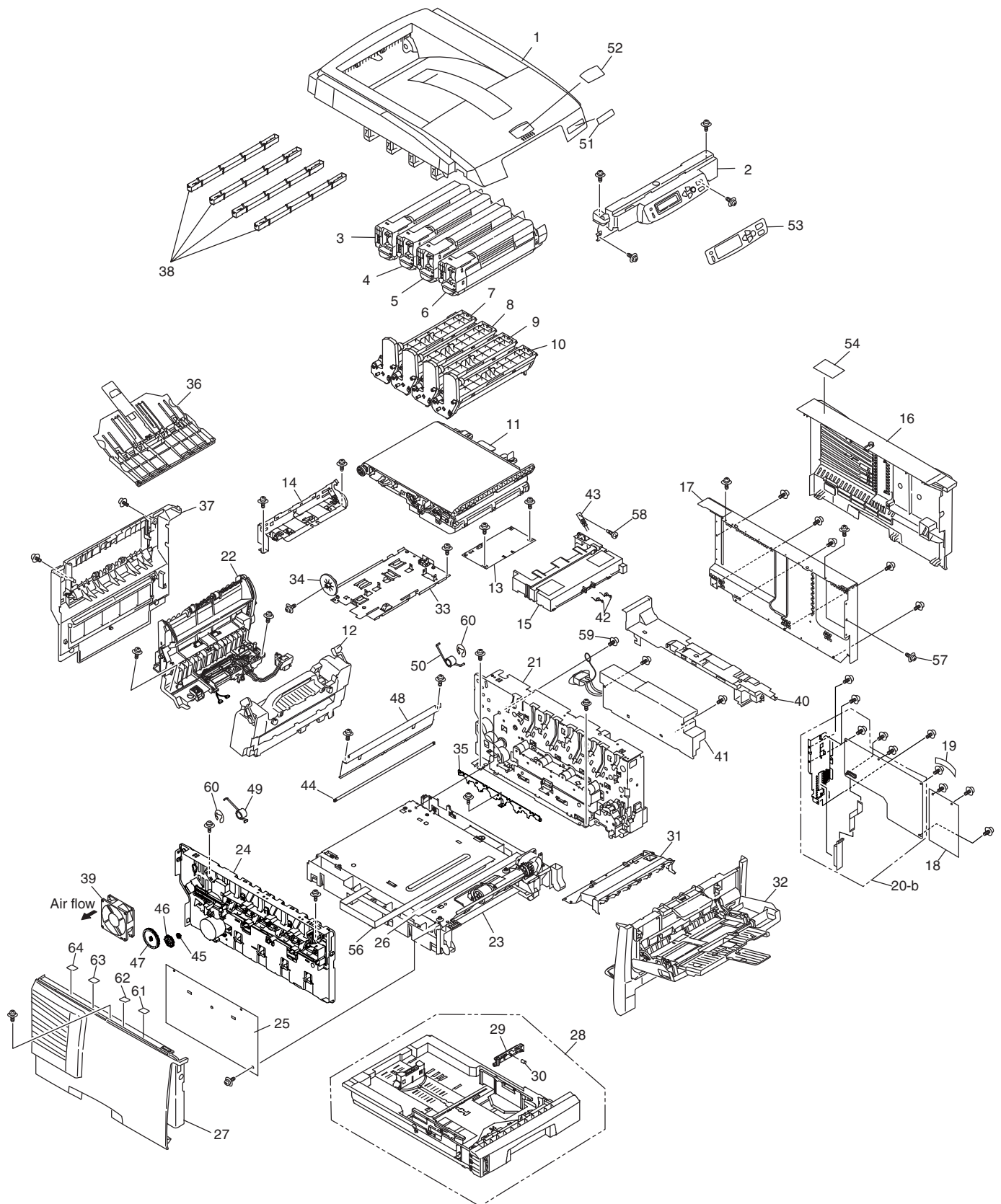


Revision 2

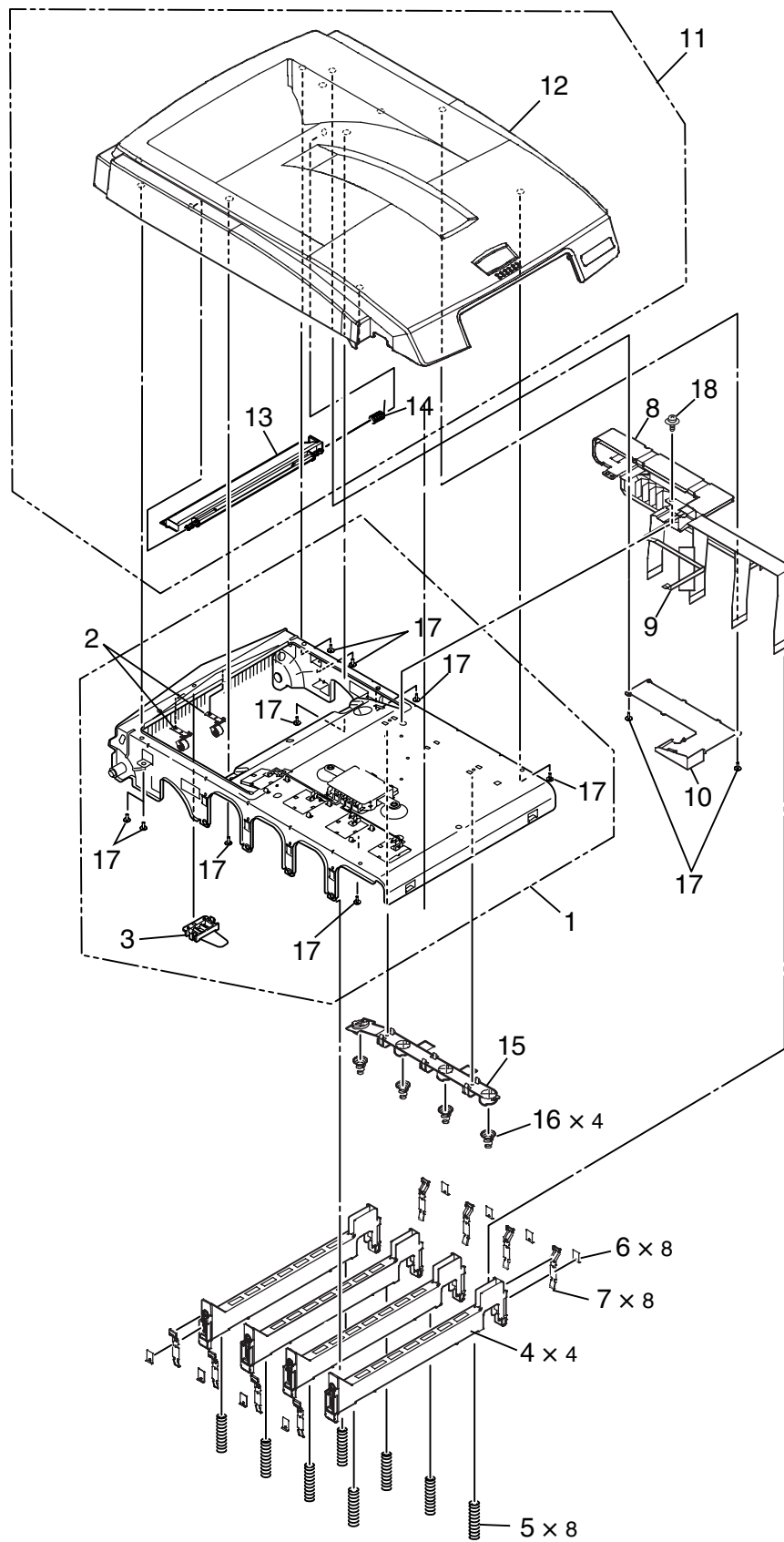
Parts Layout (C5850/C5650)



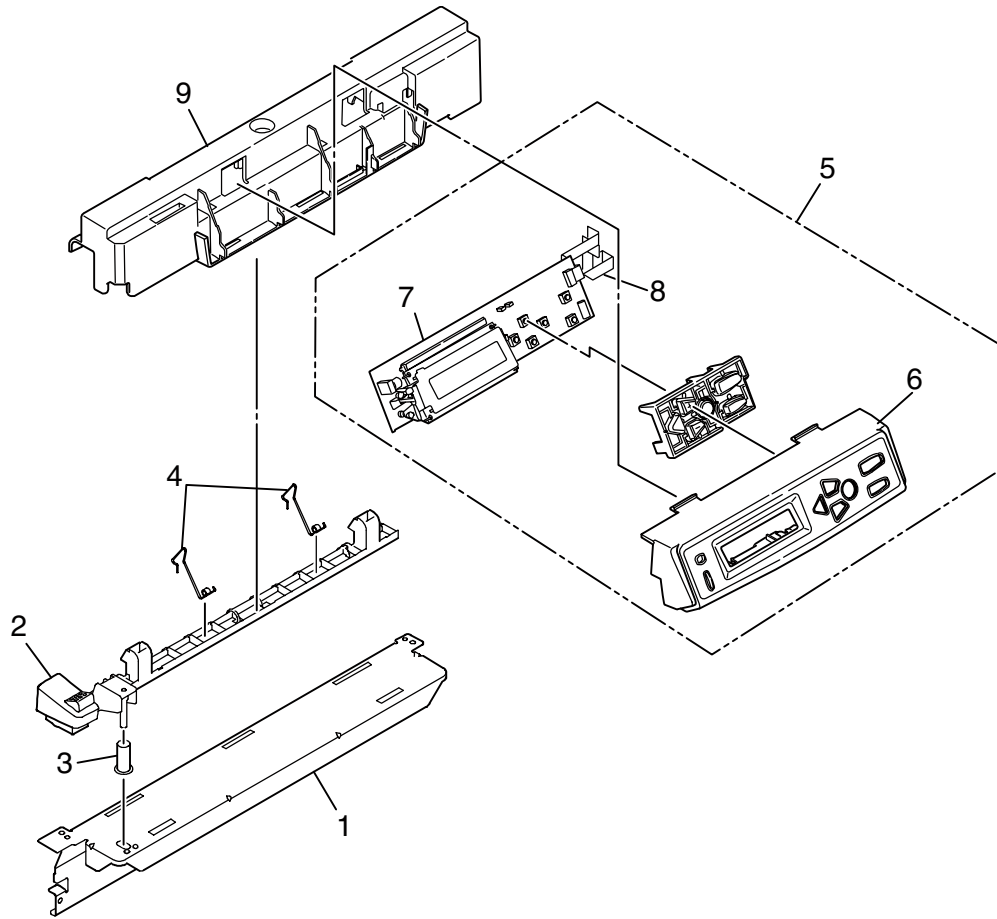
Parts Layout (C6150/C6050/C5950/C5750)



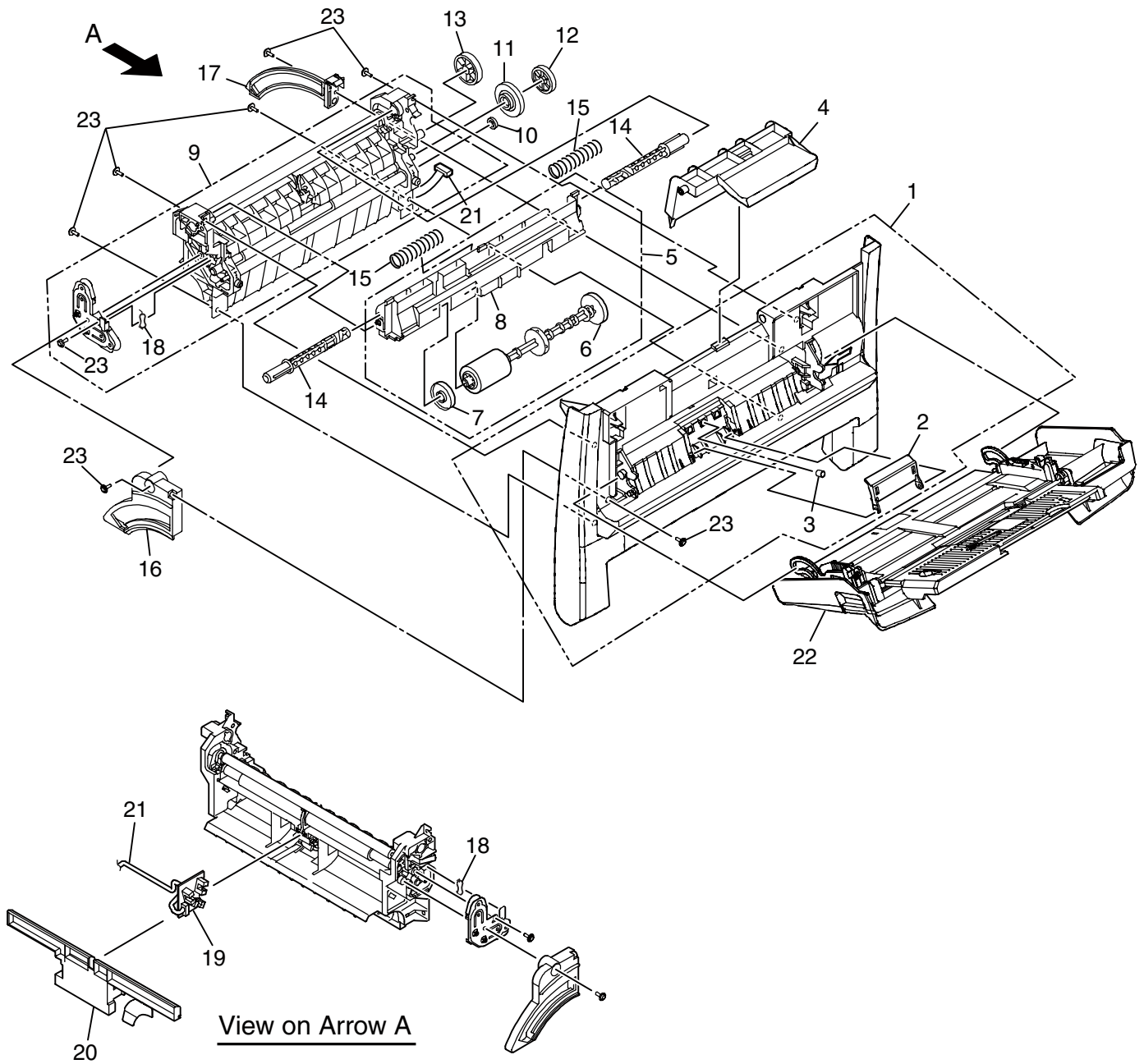
Top_Cover_Assy (C)



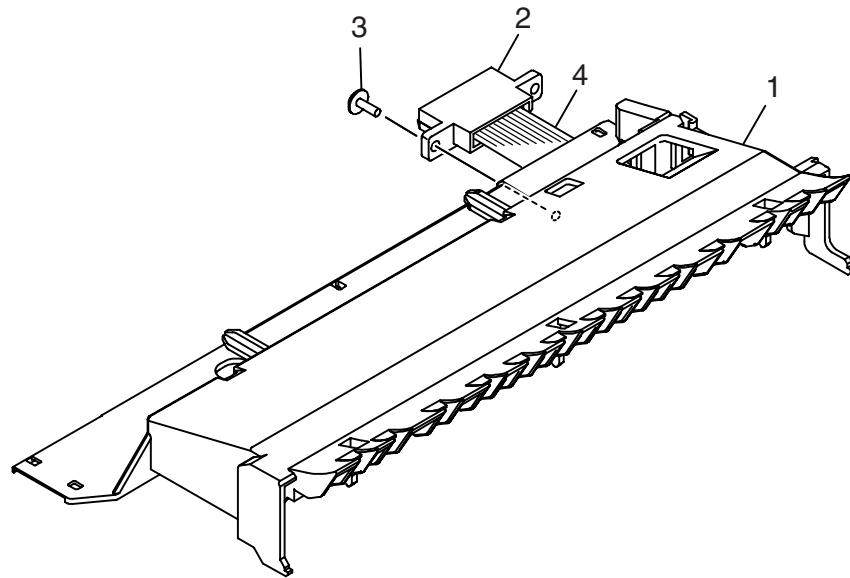
Control_Panel_Assy (C)



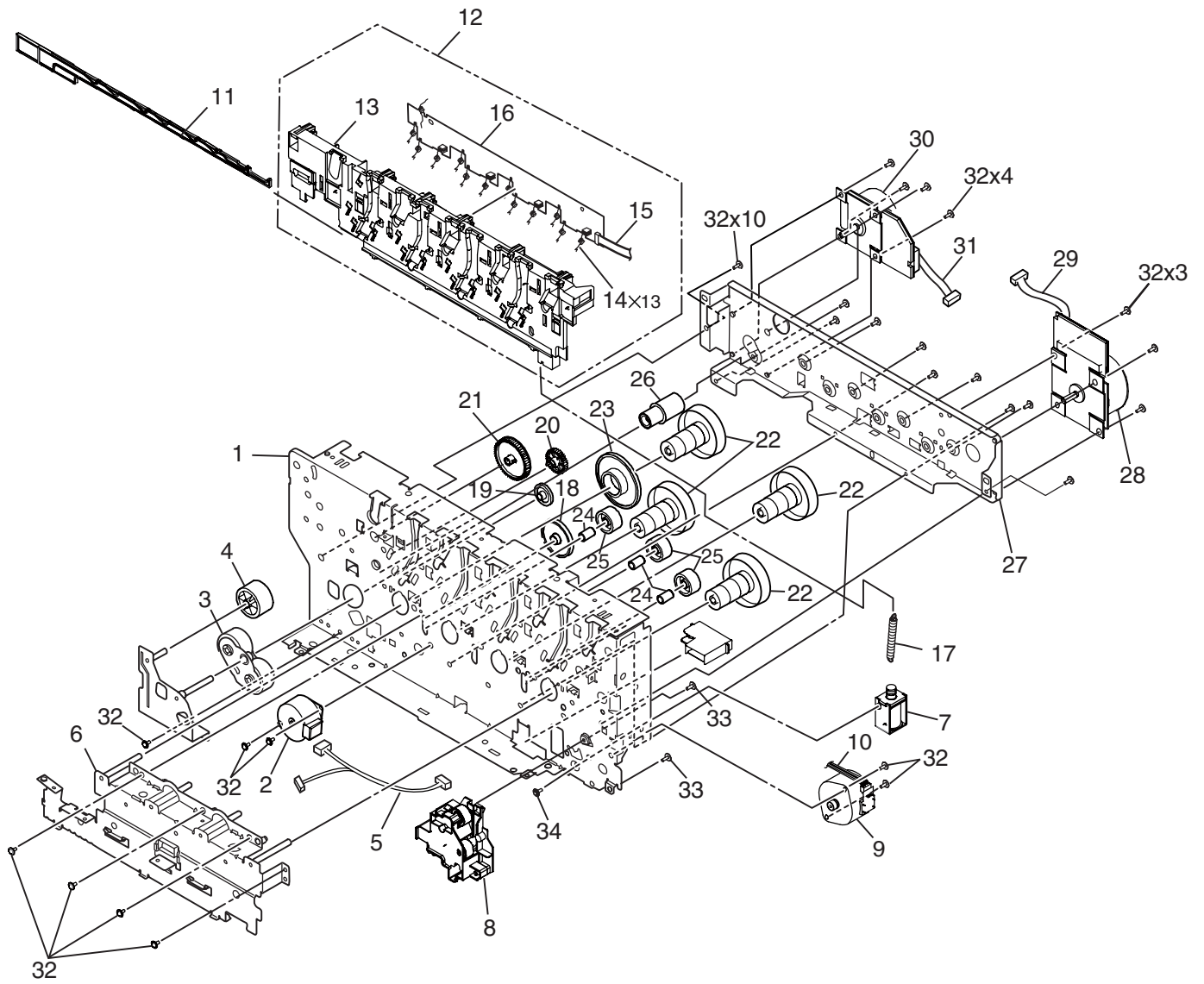
Feeder_Unit



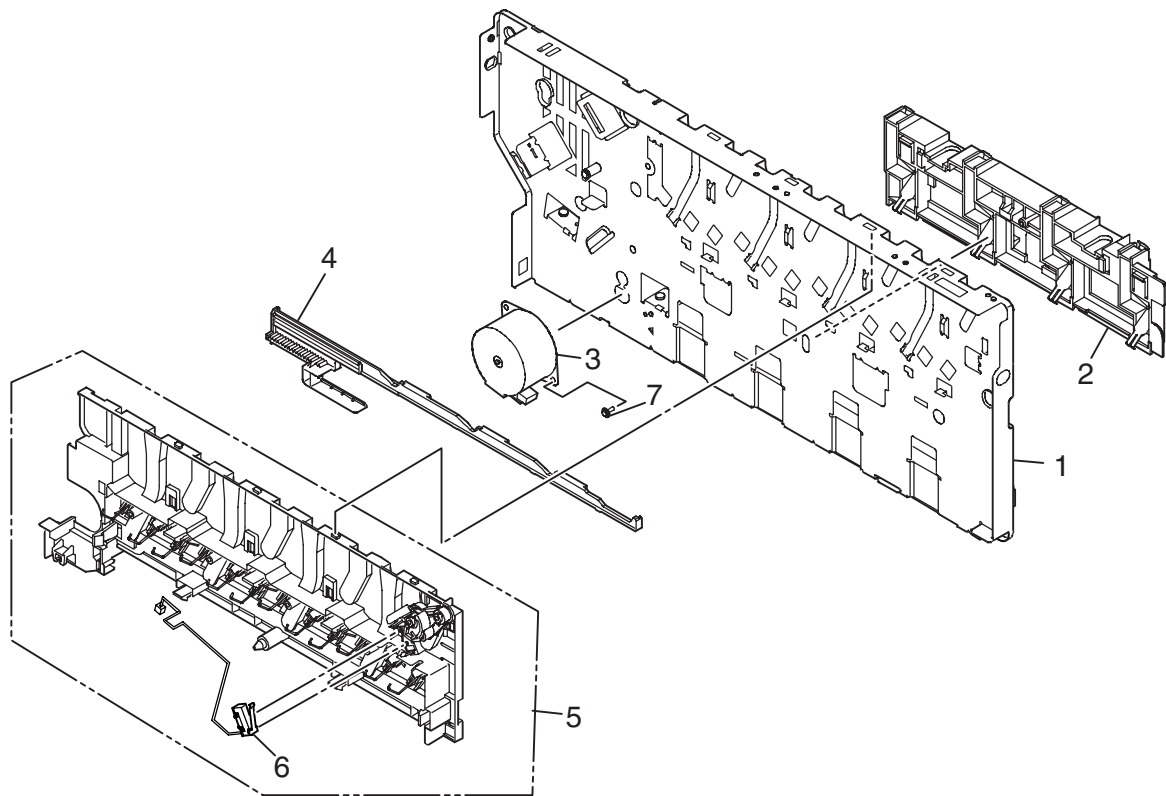
Cover_Assy-Hopping



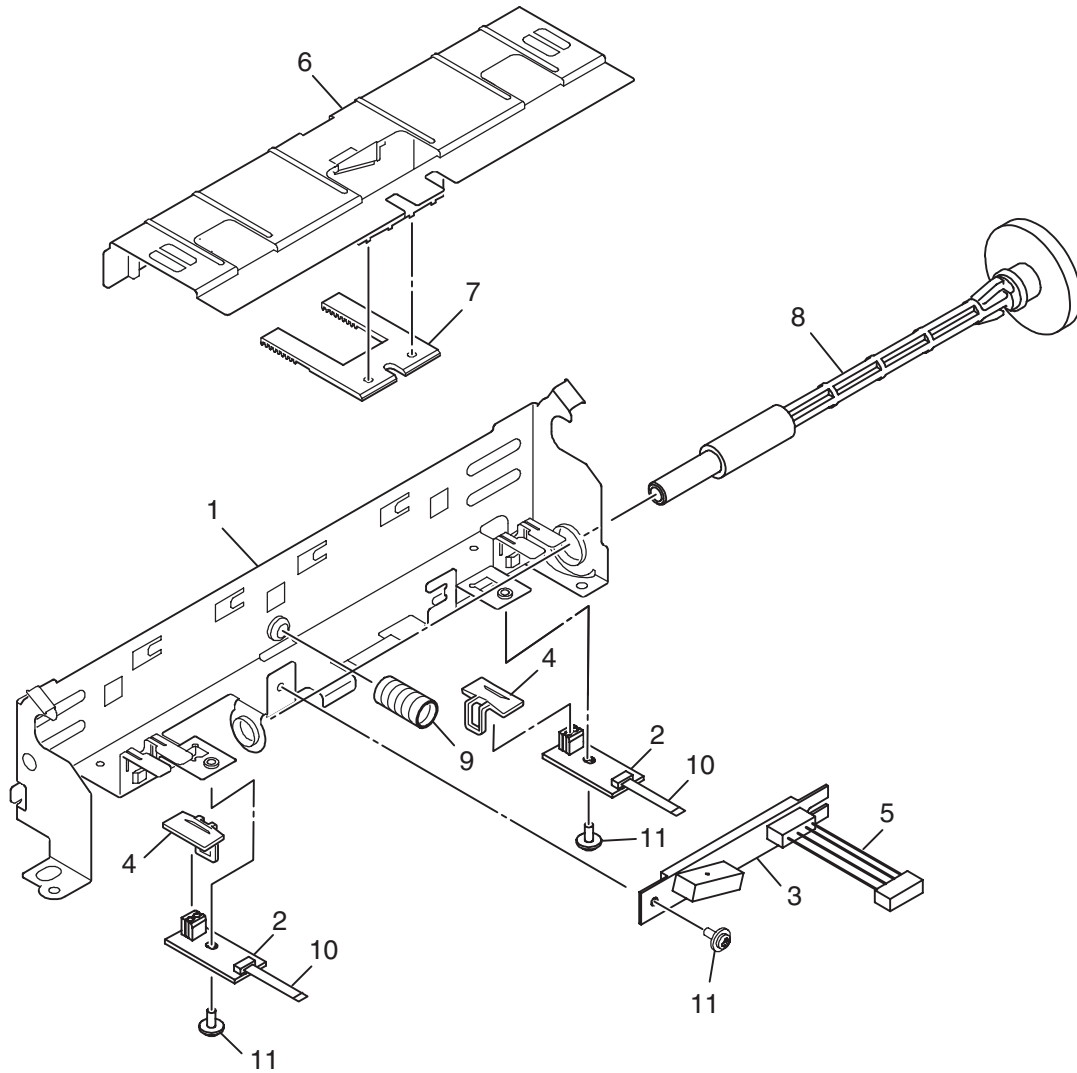
Plate_Assy-Side_R



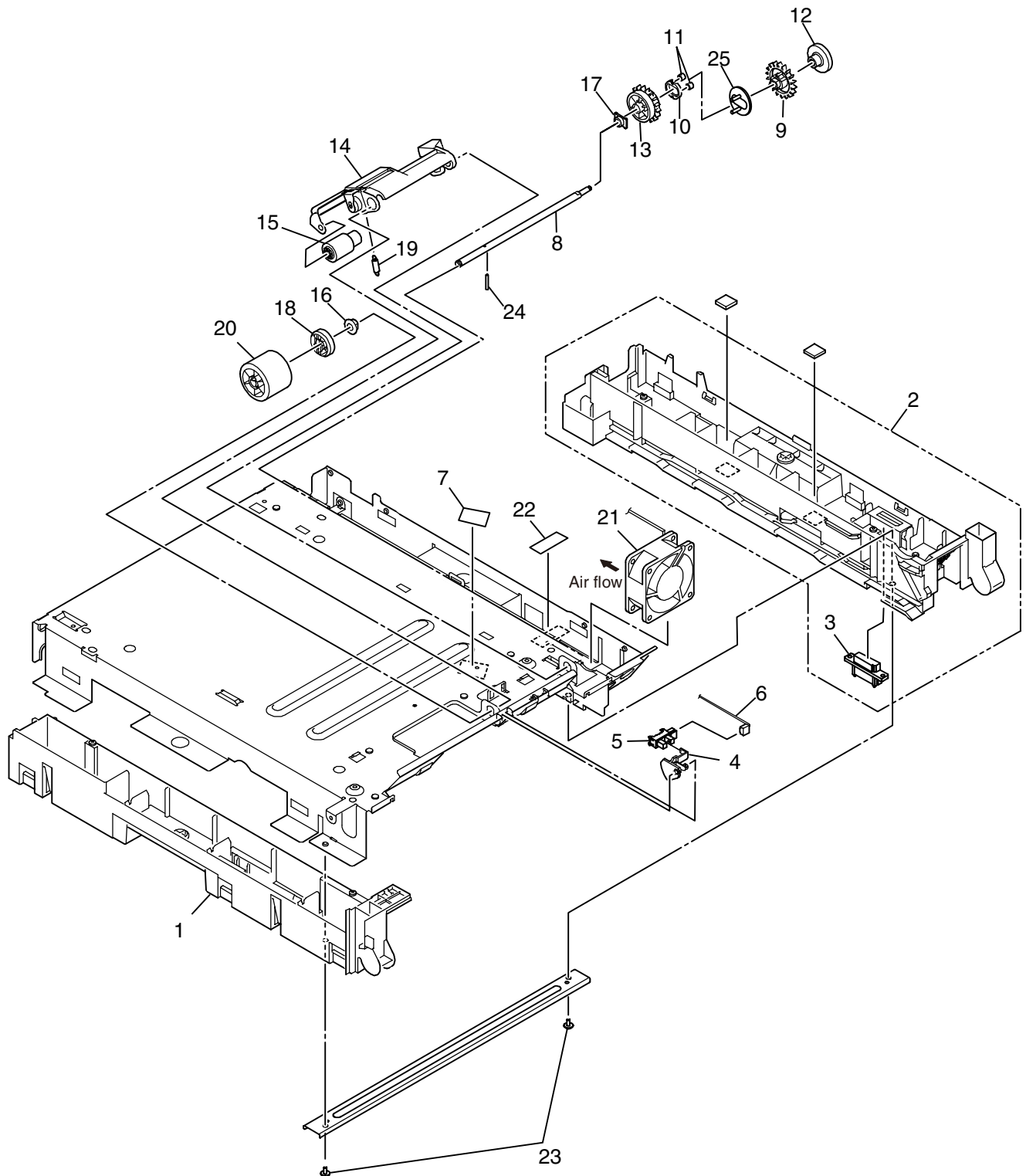
Plate_Assy-Side_L



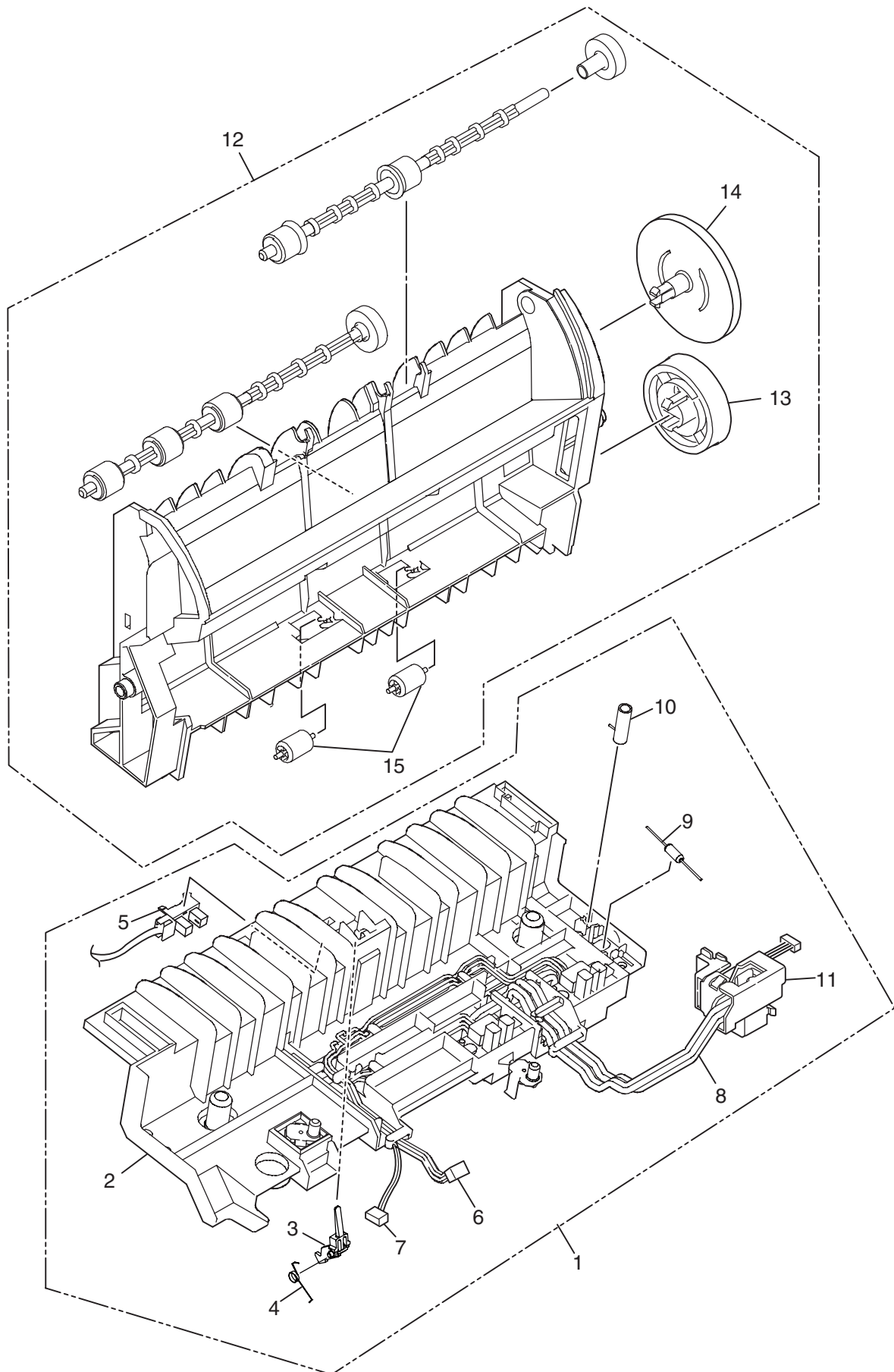
Sensor_Assy-Regist



Plate_Assy-Base



Eject_Assy



Rev	Unit Name	No.	Part No.	Part Name	Q' ty /Unit	Recommended Q' ty/Year			Remarks	Special	Del/ Add	Remarks for environment
						per 500	per 1000	per 2000				
	Printer-NIP	1	43585305	Cover Assy.-Top(C)	1	1	2	4				-
	Printer-NIP	13	43131301	OR-PRY	1	2	4	8	Board-PRY			-
	Printer-NIP	14	42626502	Sensor Assy.-Color-Regist	1	2	4	8				G
	Printer-NIP	15	42066901	Cover-Driver	1	1	2	4				-
2	Printer-NIP	16	43238905	Cover Assy.-Side(R)-735	1	1	2	4	C6150, C6050, C5950, C5750			-
2	Printer-NIP	16	43238906	Cover Assy.-Side(R)-734	1	1	2	4	C5850, C5650			-
	Printer-NIP	17	43096301	Plate-Shield-A	1	1	2	4	PDL C6150, C6050, C5950, C5750			-
	Printer-NIP	17	43096302	Plate-Shield-A	1	1	2	4	GDI C5850, C5650			-
	Printer-NIP	18	43131004	OR-PRX-5	1	2	4	8	Board-PU			-
	Printer-NIP	19	2381003P0032	TW-VF/SMCD12-40-1.0	1	1	2	4	PU-CU			-
	Printer-NIP	2	43296405	Frame Assy.-OP(C)-OEL	1	2	4	8	OEL			-
	Printer-NIP	20-a	43653202	PCB Assy.-SPV Maintenance	1	2	4	6	Controler Board CU (GDI) C5850 (OEL)			-
	Printer-NIP	20-a	43653212	PCB Assy.-SPV Maintenance	1	2	4	6	Controler Board CU (GDI) C5650 (OEL)			-
	Printer-NIP	20-b	43793703	TB2 maintainance board (C5950)	1	2	4	6	Contoroler Board CU (PCL) (Board TB2) C5950 (OEL)			-
	Printer-NIP	20-b	43793713	Board-TB2	1	2	4	6	Contoroler Board CU (PCL) (Board TB2) C5750 (OEL)			-
	Printer-NIP	21	43070501	Plate Assy.-Side R(PX734)	1	2	4	8				-
	Printer-NIP	22	43076205	Eject-Assy.	1	2	4	8				-
	Printer-NIP	23	43070304	Plate Assy.-Base	1	2	4	8				-
	Printer-NIP	24	43074901	Plate Assy.-Side L(PX-734)	1	2	4	8				-
	Printer-NIP	25	43694601	PWR unit-DCDC	1	2	4	8	High Voltage			-
	Printer-NIP	26	43393801	CONN-High Voltage (Bend)	1	1	2	4				-
	Printer-NIP	27	43108902	Cover-Side(L)	1	1	2	4				-
	Printer-NIP	28	43070402	Cassette Assy.	1	1	2	4				-
	Printer-NIP	29	42088801	Frame-Separation-Assy.	1	3	6	12				-
	Printer-NIP	30	42089001	Spring-Separation	1	3	6	12				-
	Printer-NIP	31	42061504	Cover Assy.-Hopping	1	2	4	8				-
	Printer-NIP	32	43077408	Feeder-Unit-PX744/5(C)	1	2	4	8				-
	Printer-NIP	33	42062102	Plate-Driver(PU) (Caulking)	1	1	2	4				-
	Printer-NIP	34	43076101	Gear-Idle-Belt-Z20Z93	1	1	2	4				-
	Printer-NIP	35	43073505	Plate-Lockout-ID	1	1	2	4	C5950, 5850, C5750, C5650_OEL, AOS			-
	Printer-NIP	36	43078702	Cover Assy.-FaceUP	1	1	2	4				-
	Printer-NIP	37	43078402	Cover-Sub Assy.-Rear	1	1	2	4				-
	Printer-NIP	38	43295201	LED Head Unit-51STA	4	2	4	8	600DPI			-
	Printer-NIP	39	43289101	OR-Motor-FAN(80)	1	1	2	4	FUSER			-
	Printer-NIP	40	43121701	Guide-Cable-(Pow-Low)	1	1	2	4				-
	Printer-NIP	41	43455902	PWR unit-ACDC Switch	1	2	4	8	Power Unit (LOW Voltage) 200V (OEL, ODA, AOS)			-
	Printer-NIP	42	42067001	Spring-BeltFuse	2	1	2	4				-
	Printer-NIP	43	42605201	Thermistor-Belt	1	2	4	8				G
	Printer-NIP	44	43076501	Shaft-Liftup-PX734	1	1	2	4				-

Rev	Unit Name	No.	Part No.	Part Name	Q' ty /Unit	Recommended Q' ty/Year			Remarks	Special	Del/ Add	Remarks for environment
						per 500	per 1000	per 2000				
	Printer-NIP	45	42060701	Bush	1	1	2	4				-
	Printer-NIP	46	43075201	Gear-LiftupL-Z32	1	1	2	4				-
	Printer-NIP	47	43075501	Gear-LiftUpLinkL-Z56	1	1	2	4				-
	Printer-NIP	48	43110801	Plate-Heat	1	1	2	4				-
	Printer-NIP	49	42076901	Spring-Torsion(L)	1	1	2	4				-
	Printer-NIP	50	42077001	Spring-Torsion(R)	1	1	2	4				-
	Printer-NIP	52	43691301	Plate-Logo	1	1	2	4				
	Printer-NIP	53	43396908	Sheet-OP-Panel (C)	1	1	2	4				-
	Printer-NIP	54	43429801	Label-FuserJAM	1	1	2	4				-
	Printer-NIP	56	43348901	CONN-Cord-FlexyDP (Bend)	1	2	4	8	PU-PRY			-
	Plate-Assy. -SideL (PX-734)	3	43276401	OR-Motor_Pulse_Belt	1	1	2	4				-
	Plate-Assy. -SideL (PX-734)	6	42611101	Micro switch-Assy.	1	2	4	8				G
	Plate-Assy. -Base	15	43334801	Roller Assy. -Sub	1	1	2	4				-
	Plate-Assy. -Base	20	43334901	Roller Assy. -Hopping	1	1	2	4				-
	Plate-Assy. -Base	21	43191301	Motor-Fan(60)PowL	1	1	2	4				-
	Plate-Assy. -Base	3	2233013P0100	9715B-10Z02-G4C	1	2	4	8				G
	Plate-Assy. -Base	5	40135301	Photo-Interrupter	1	1	2	4	Paper END			G
	Plate-Assy. -Base	6	43093701	CONN Cord-JST3P-AMP3P	1	1	2	4	PU-Paper END			-
	Plate Assy. -Side R (PX734)	10	43093301	CONN Cord-AMP4P-AMP4P	1	1	2	4	HOP Motor-PU			-
	Plate Assy. -Side R (PX734)	15	2381003P0034	TW-VF/SMCD11-150-1.0	1	1	2	4	PRZ-PU			-
	Plate Assy. -Side R (PX734)	16	43131601	OR-PRZ	1	1	2	4	Board-PRZ Toner Sensor			-
	Plate Assy. -Side R (PX734)	2	43276201	OR-Motor_Pulse_Liftup	1	1	2	4				-
	Plate Assy. -Side R (PX734)	28	43072001	Motor-DC-ID-58M	1	1	2	4				-
	Plate Assy. -Side R (PX734)	29	43138101	CONN Cord-AMP10P-AMP10P	1	1	2	4	ID Motor-PU			-
	Plate Assy. -Side R (PX734)	30	43070601	Motor-DC-FU-45M	1	1	2	4				-
	Plate Assy. -Side R (PX734)	31	43138301	CONN Cord-AMP9P-AMP9P	1	1	2	4	Fuser Motor-PU			-
	Plate Assy. -Side R (PX734)	5	43138001	CONN Cord-AMP8P-AMP4PAMP4P	1	1	2	4	Belt/IDUP Motor-PU			-
	Plate Assy. -Side R (PX734)	7	42058303	Solenoid	1	1	2	4				G
	Plate Assy. -Side R (PX734)	9	43276301	OR-Motor_Pulse_HOP	1	1	2	4				-
	Frame Assy. -OP (C)	7	43132502	OR-PRP	1	1	2	4	Board-PRP OEL, AOS			-
	Frame Assy. -OP (C)	8	2381003P0036	TW-VF/SMCD7-260-1.0	1	1	2	4	Control Panel-PU			-
	Feeder-Unit-PX744/5	19	42135802	Board-RSF	1	2	4	8	Front Sensor			G
	Feeder-Unit-PX744/5	21	43093601	CONN Cord-AMP5P-AMP5P	1	1	2	4	RSF-PU			-
	Eject-Assy	1	43076302	Guide Assy. -Eject-L	1	1	2	4				-
5	Eject-Assy	12	43560405	Guide Assy. -Eject-U	1	1	2	4				-
	Cover Assy. -Top (C)	8	43239001	Cable Assy. -Head	1	2	4	8				-
	Cover Assy. -Top (C)	9	43297001	Cable-RFID (bend)	1	1	2	4				-