

---

## 4 Parts and diagrams

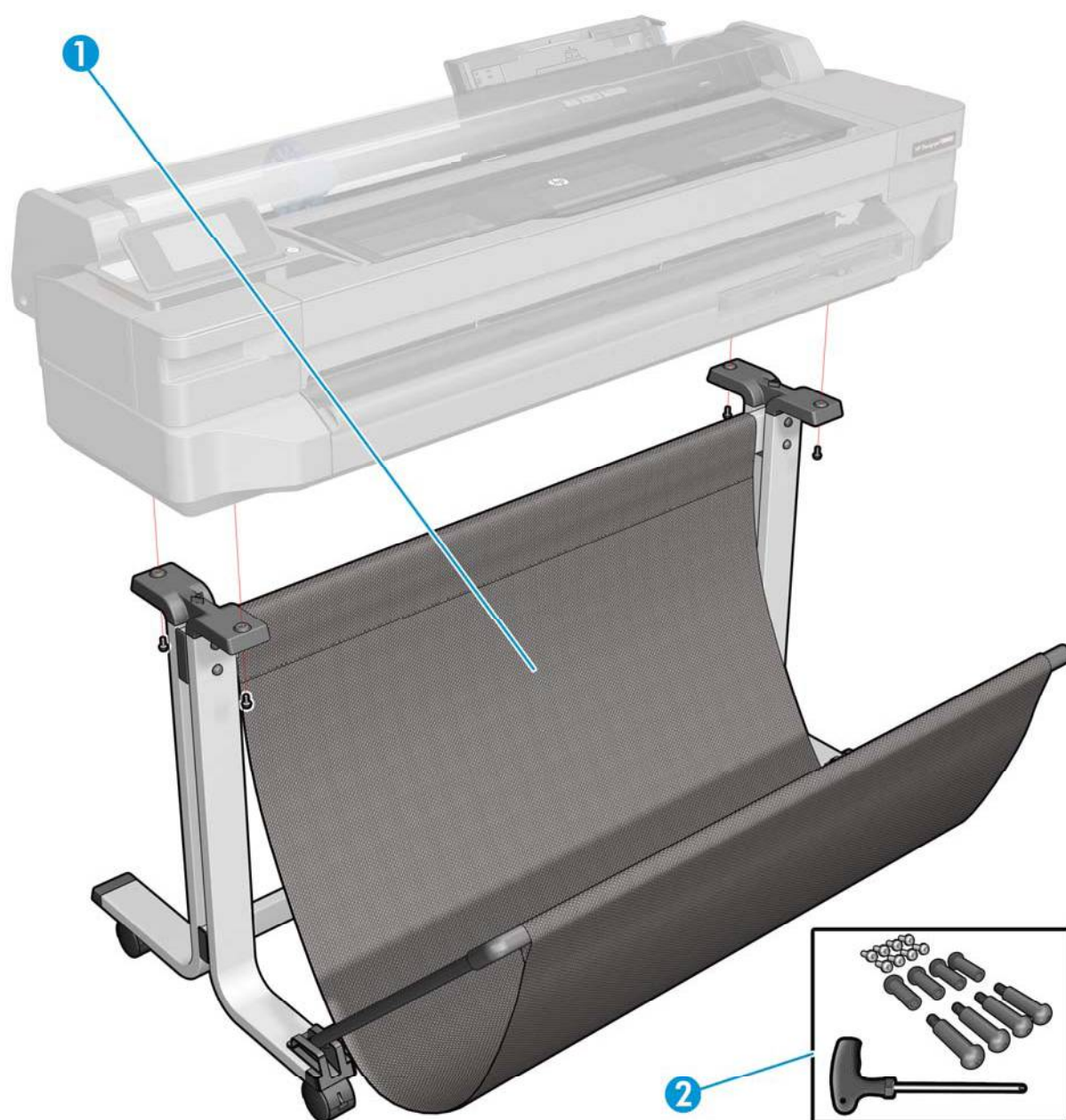
- [Introduction](#)
- [Printer support](#)
- [Covers](#)
- [Roll covers](#)
- [Right-hand assemblies](#)
- [Left-hand assemblies](#)
- [Carriage assembly](#)
- [Paper path \(front\)](#)
- [Paper path \(rear\)](#)
- [Roll supports](#)
- [Sensor Kit](#)
- [Miscellaneous parts](#)

### Introduction

- The list of parts in this chapter include the notation CSR A or CSR B for parts that can be replaced [Customer Self Repair parts](#) on page 145
- [Preventive maintenance kits](#) on page 320
- Unless otherwise indicated, service parts are compatible with all SKUs. If there is any limitation, it is indicated in the tables below as follows:
  - 36: compatible with the 36-in T520.
  - 24: compatible with the 24-in T520 and the T120.
  - Pro: compatible with the T520.
  - Basic: compatible with the T120.

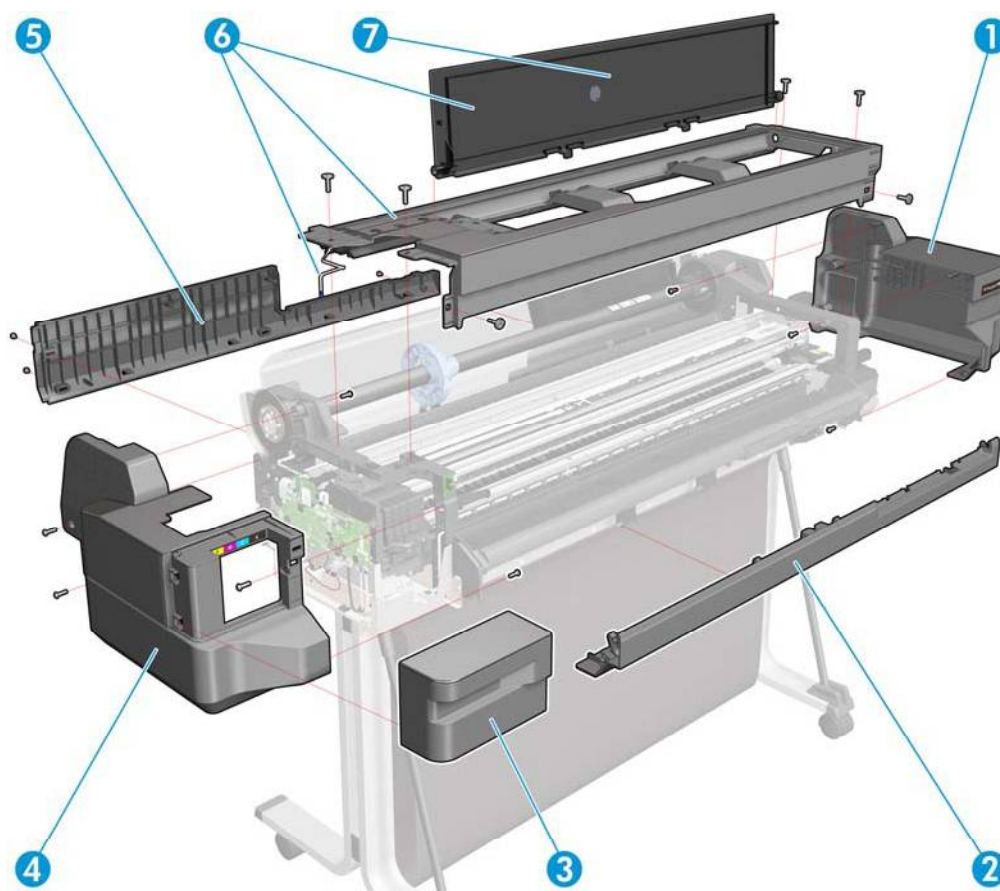
# Printer support

	HP part number	Part description	Removal and installation reference	Comments
1	CQ890-67052	Stand Assembly (24)		CSR A. Includes all parts needed to repair the stand: bin, legs, wheels, brackets, hardware kit, etc., and instruction flier. There are no separate kits for single components.
	CQ890-67053	Stand Assembly (36)		
2	CQ890-67054	Stand Hardware Kit		CSR A. Includes all screws and tools to repair and mount the stand.



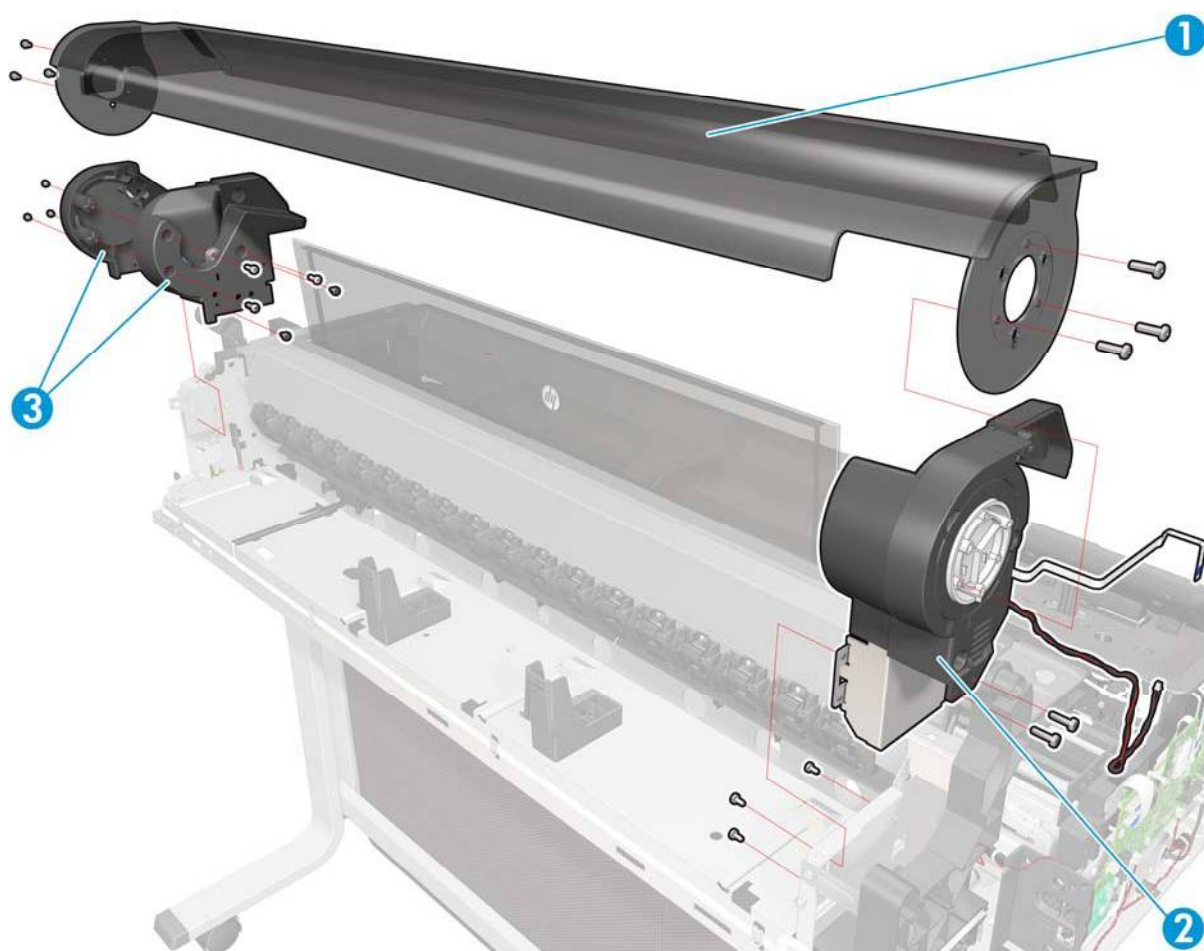
# Covers

	HP part number	Part description	Removal and installation reference	Comments
			<a href="#">Right Cover on page 153</a>	
2			<a href="#">Front Cover on page 150</a>	<a href="#">Front Cover flier on page 353</a>
	CQ894-67001	Front Cover (36)		
			<a href="#">Ink Cartridge Cover on page 156</a>	<a href="#">Ink Cartridge Cover flier on page 354</a>
			<a href="#">Left Cover on page 158</a>	
5			<a href="#">Back Cover on page 163</a>	
	CQ893-67002	Back Cover (36)		
6			<a href="#">Central Cover on page 172</a>	Includes Top Cover and Top Cover Sensor
	CQ891-67008	Central Cover (24-Pro)		
	CQ893-67004	Central Cover (36)		
7			<a href="#">Top Cover on page 147</a>	Opaque
	CQ890-67009	Top Cover (24-Pro)	also known as Central Window	Transparent
	CQ890-67008	Top Cover (36)		



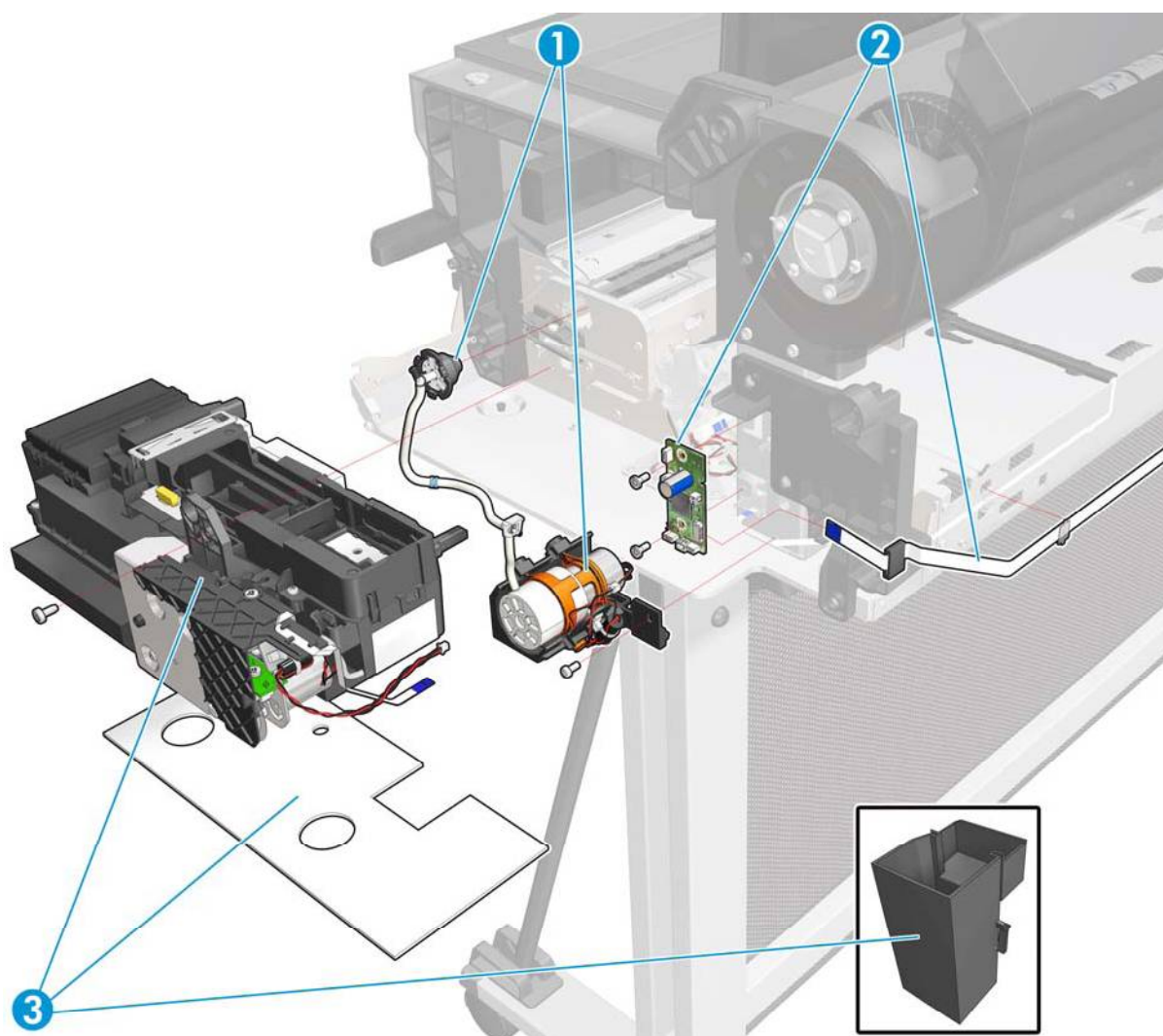
# Roll covers

	HP part number	Part description	Removal and installation reference	Comments
1			<a href="#">Roll Cover on page 160</a>	
	CQ893-67003	Roll Cover (36)		
2	CQ890-67051	Left Roll Support with	<a href="#">Left Roll Support on page 180</a>	
	CQ890-67037	Left Roll Support with Rewinder and Cover (Pro)		
3	CQ890-67038	Right Roll Support with Cover	<a href="#">Right Roll Support on page 185</a>	The Basic Right Roll Support does not need dampers because there is no Roll Cover.
	CQ891-67009	Right Roll Support with Cover (Basic)		



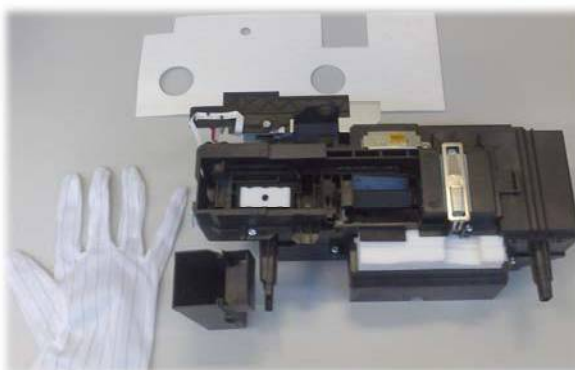
## Right-hand assemblies

	HP part number	Part description	Removal and installation reference	Comments
			<a href="#">Prime Pump on page 233</a>	
			<a href="#">Bundle Board on page 297</a>	Interconnect board
			<a href="#">Service Station on page 227</a>	Includes the Service Station motor, encoder, spittoons, wipers, extra absorber pad (in case of need), extra left spittoon (in case of need), and gloves. The Left Spittoon is available also in a <a href="#">Left-hand assemblies on page 132</a> ).



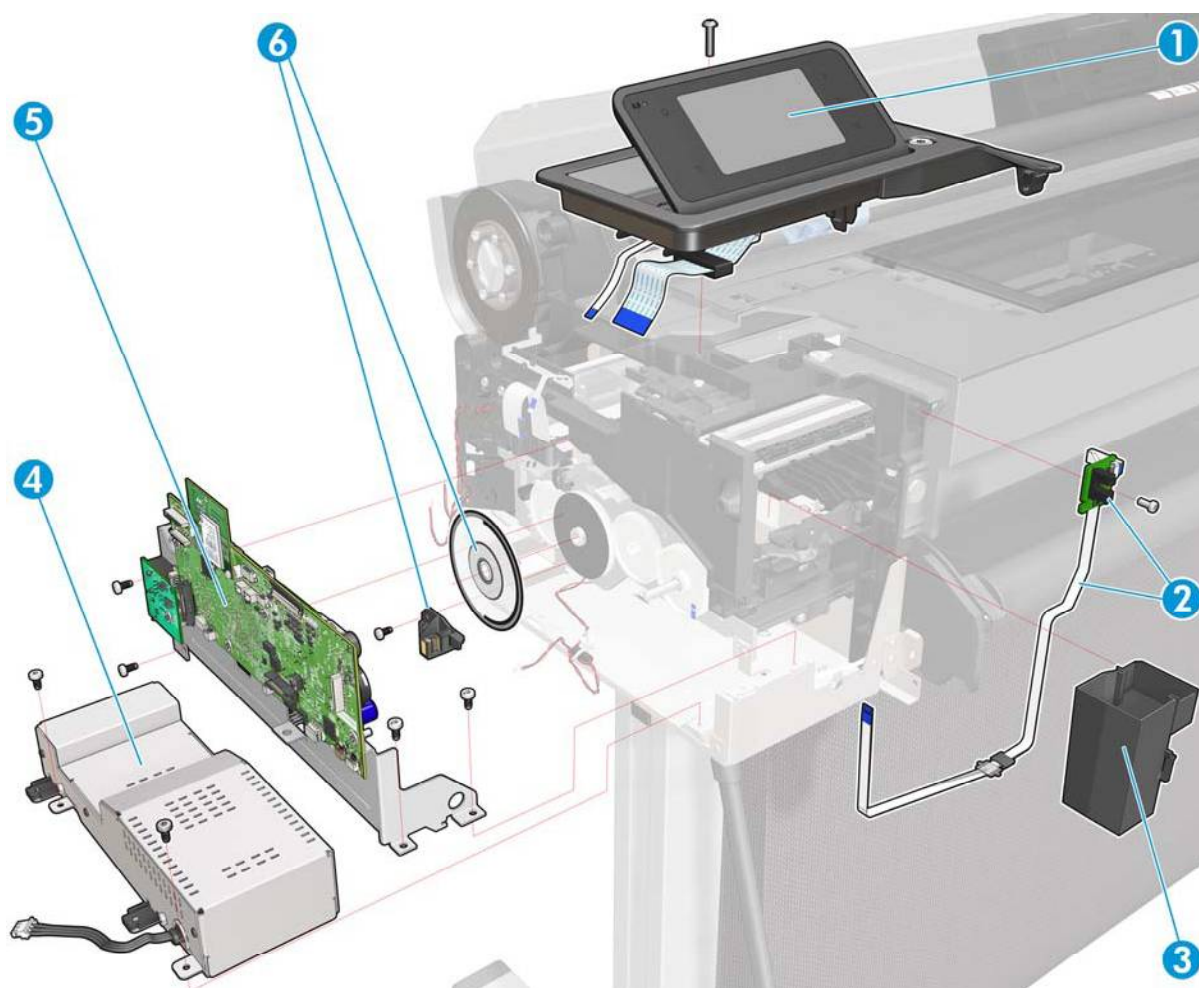


## Service Station kit



# Left-hand assemblies

	HP part number	Part description	Removal and installation reference	Comments
			<a href="#">Front Panel on page 165</a>	Includes Front Panel PCA, Power button, cable, and ribbon cable incorporated and assembled. There is no separate kit for the Power button PCA, always order the full Front Panel module.
			<a href="#">Ink Cartridge Cover PCA Assembly on page 198</a>	
			<a href="#">Left Spittoon on page 310</a>	Includes gloves
			<a href="#">Power Supply on page 202</a>	
5			<a href="#">Main PCA on page 205</a>	Includes the Wireless PCA
	CQ891-67003	Main PCA Basic		
			<a href="#">Encoder Disk on page 217</a>	Includes instruction flier and gloves



## Ink Cartridge Cover Sensor kit



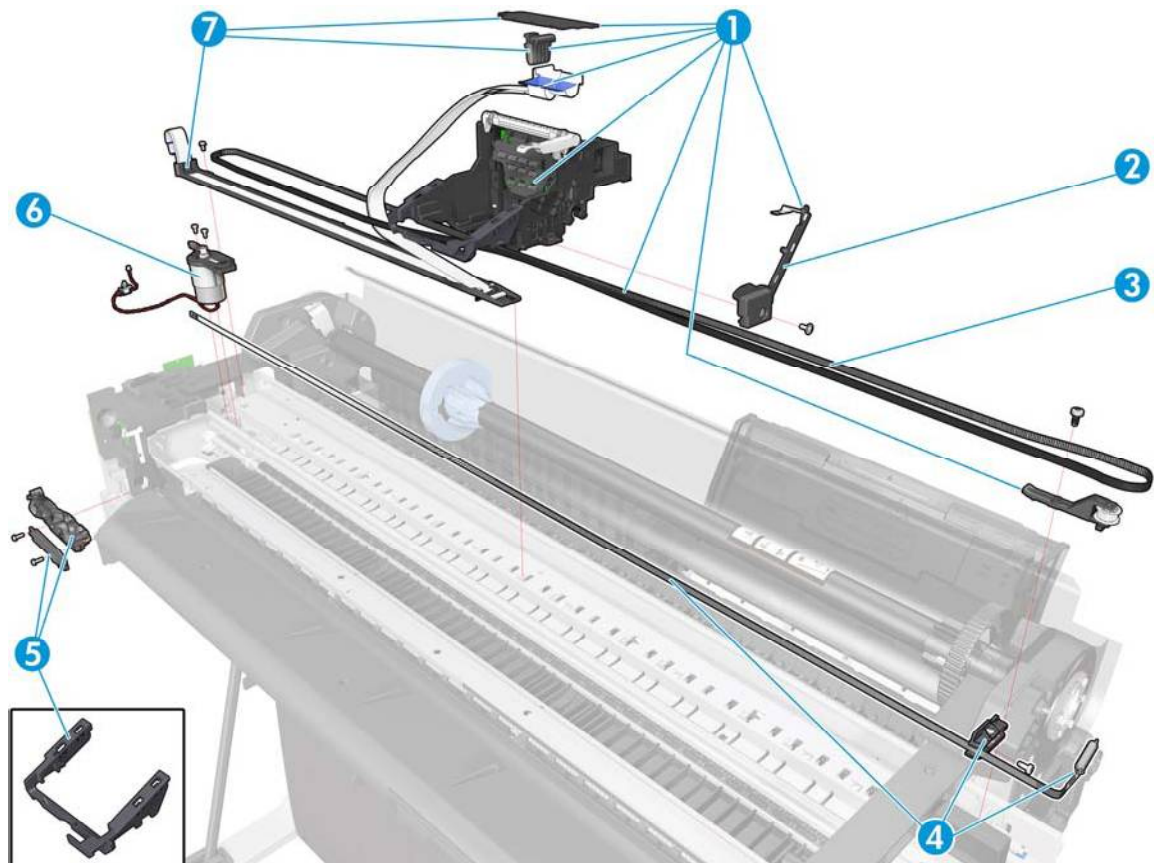
## Encoder Disk kit





# Carriage assembly

	HP part number	Part description	Removal and installation reference	Comments
1	CQ890-67002	Carriage Assembly with Belt	<a href="#">Carriage and Belt on page 236</a>	Includes carriage base, carriage PCA and cover, Carriage Line Sensor, extra Encoder Strip, instruction flier, and gloves
	CQ893-67011	Carriage Assembly with Belt (36)		
2	CQ890-67001	Carriage Line Sensor (ZIM	<a href="#">Carriage Line Sensor on page 293</a>	Includes T-6 screwdriver
3			<a href="#">Carriage Belt on page 243</a>	
	CQ893-67016	Belt (36)		
4			<a href="#">Encoder Strip on page 193</a>	Includes gloves
	CQ890-67004	Encoder Strip (36)		
			<a href="#">Cutter Assembly on page 272</a>	Includes cutter body, cutter extrusion lead (cover), cutter bridge, and instruction flier
			<a href="#">Carriage Motor on page 268</a>	Includes instruction flier and gloves
7			<a href="#">Trailing Cable on page 220</a>	
	CQ893-67001	Trailing Cable (36)		



## Carriage Line Sensor kit

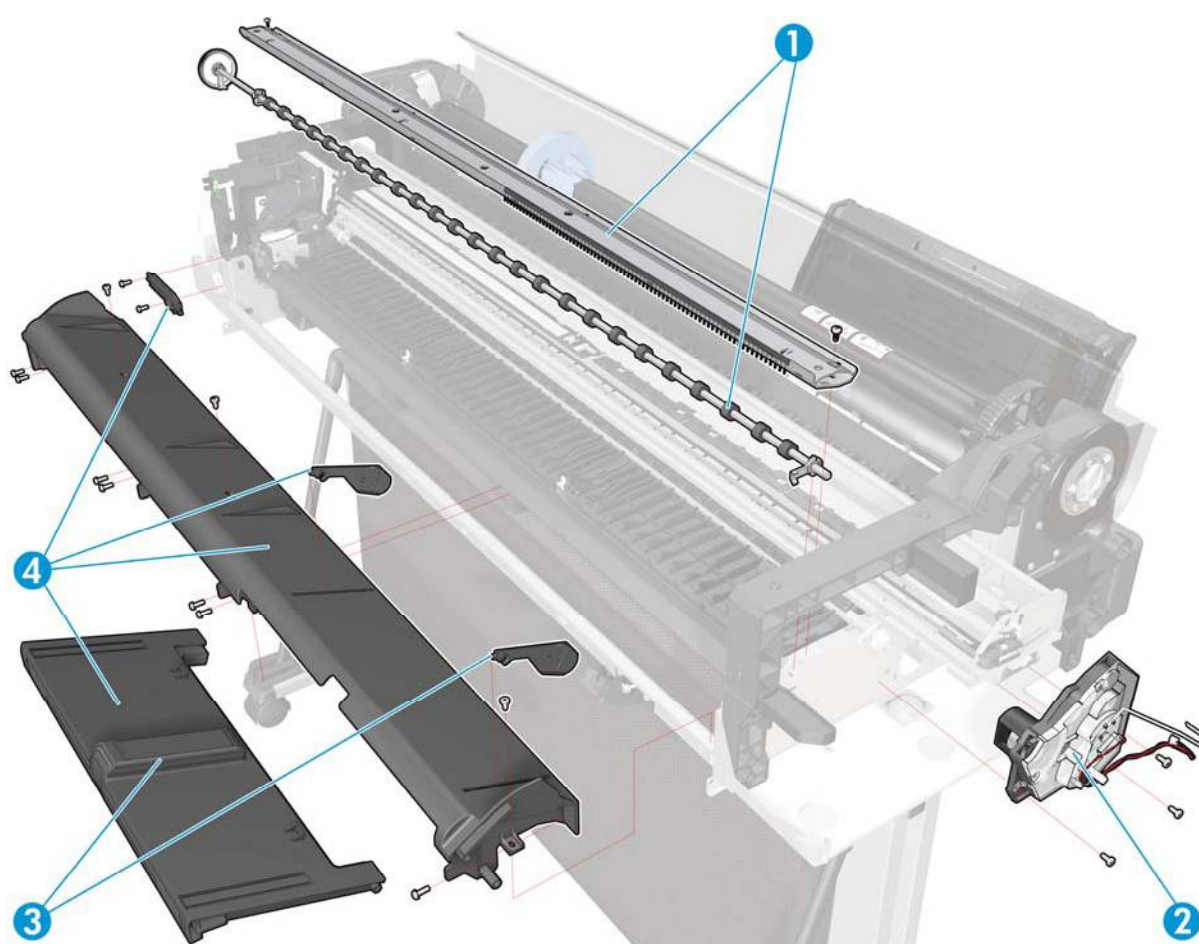


## Encoder Strip kit



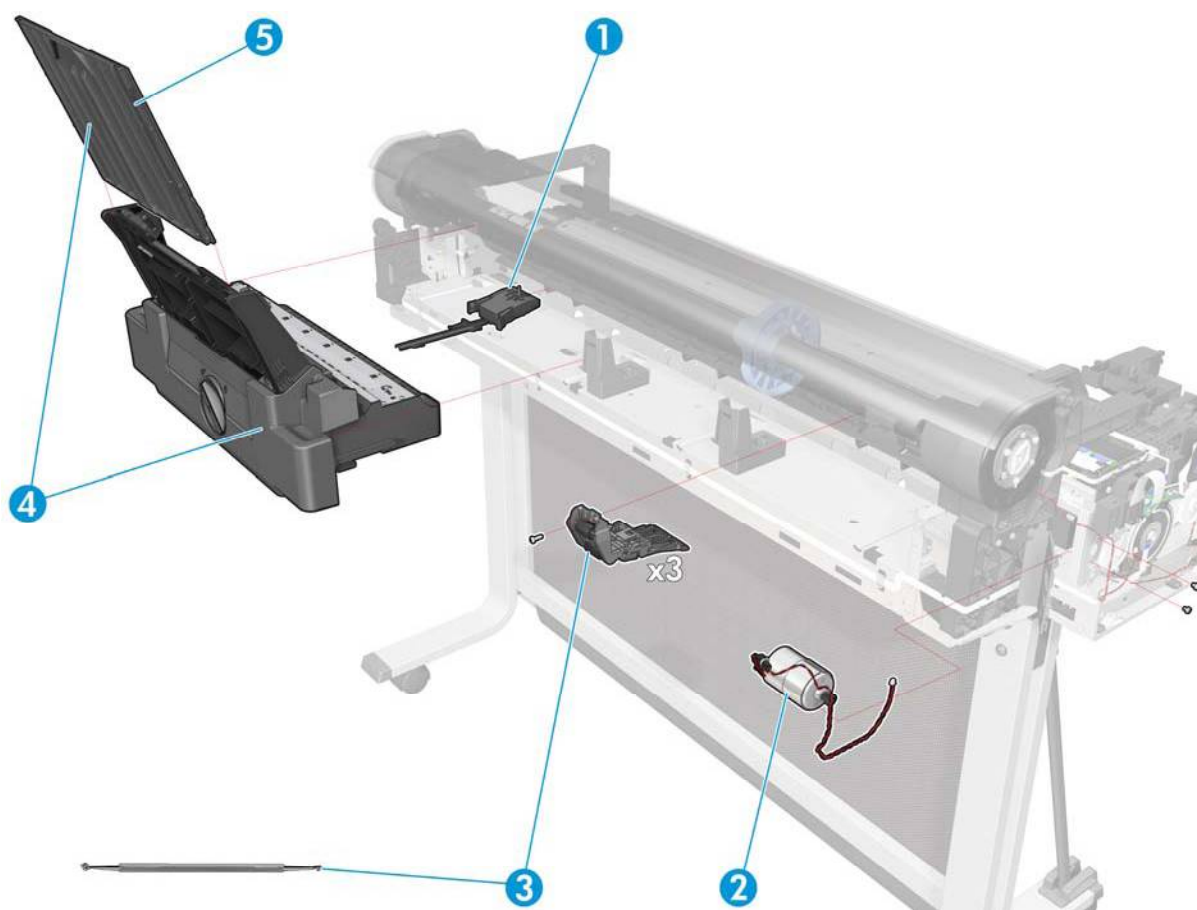
## Paper path (front)

	HP part number	Part description	Removal and installation reference	Comments
1			<a href="#">Starwheel Assembly on page 247</a>	Includes the Output Shaft and instruction flier
	CQ893-67007	Starwheel Assembly (36)		
			<a href="#">Right Gear Train Module on page 245</a>	
3			<a href="#">Output Tray on page 257</a>	
	CQ891-67010	Output Tray (Basic)		
4			<a href="#">Output Platen on page 263</a>	The cutter rail is not a service part
	CQ890-67018	Output Platen (24-Pro)		
	CQ893-67005	Output Platen (36)		
	CQ893-67018	Output Tray Sensor without cable		<a href="#">Output Tray Sensor flier on page 363</a>



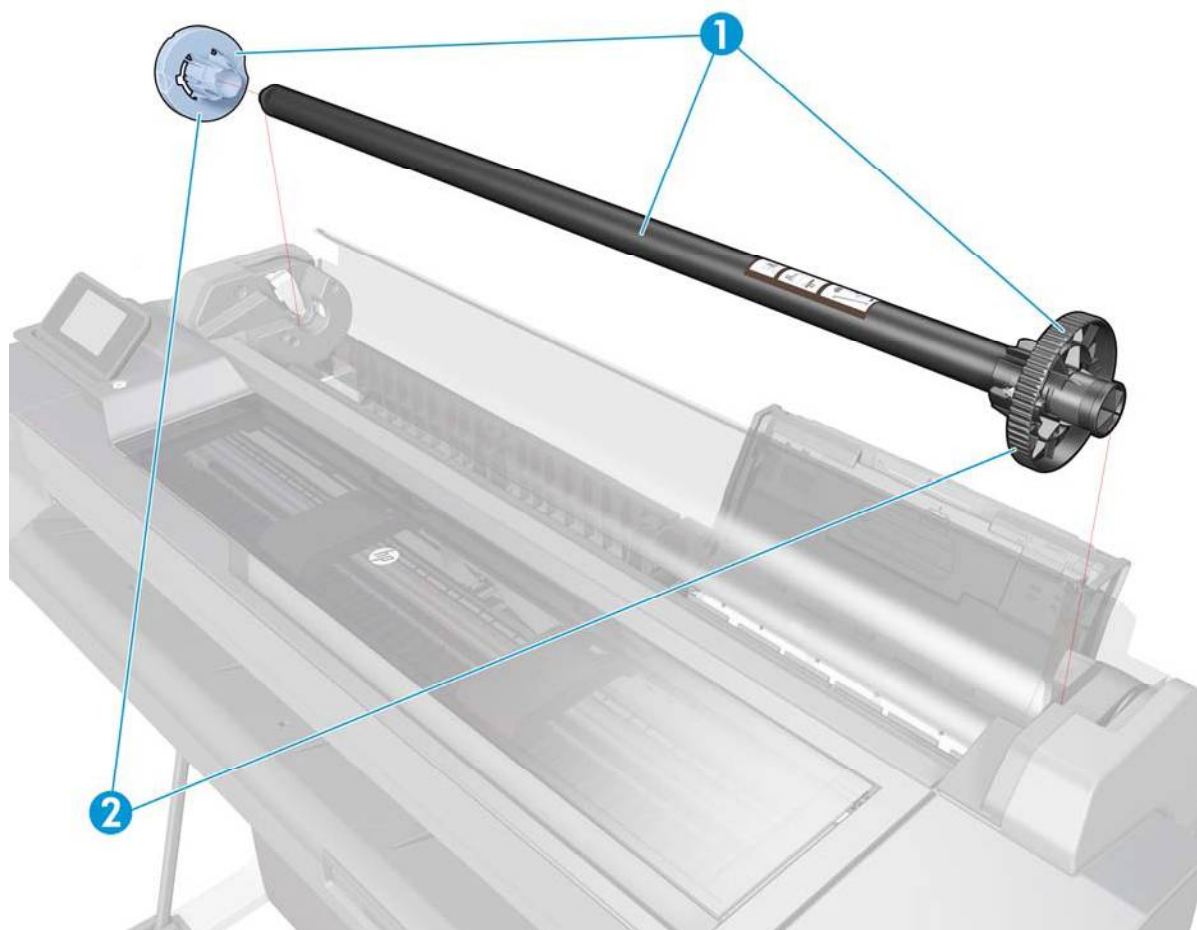
## Paper path (rear)

	HP part number	Part description	Removal and installation reference	Comments
1	CQ890-67032	Out-Of-Paper Sensor without	<a href="#">Out-Of-Paper Sensor on page 281</a>	<a href="#">Out-Of-Paper Sensor flier on page 358</a>
			<a href="#">Paper Motor on page 211</a>	
			<a href="#">Pinchwheels on page 304</a>	Includes 3 pinchwheels, a tool to remove and mount them, and an instruction flier
			<a href="#">Multi-Sheet Tray Assembly on page 260</a>	CSR A
				<a href="#">Multi-Sheet Tray Extension flier on page 356</a>



# Roll supports

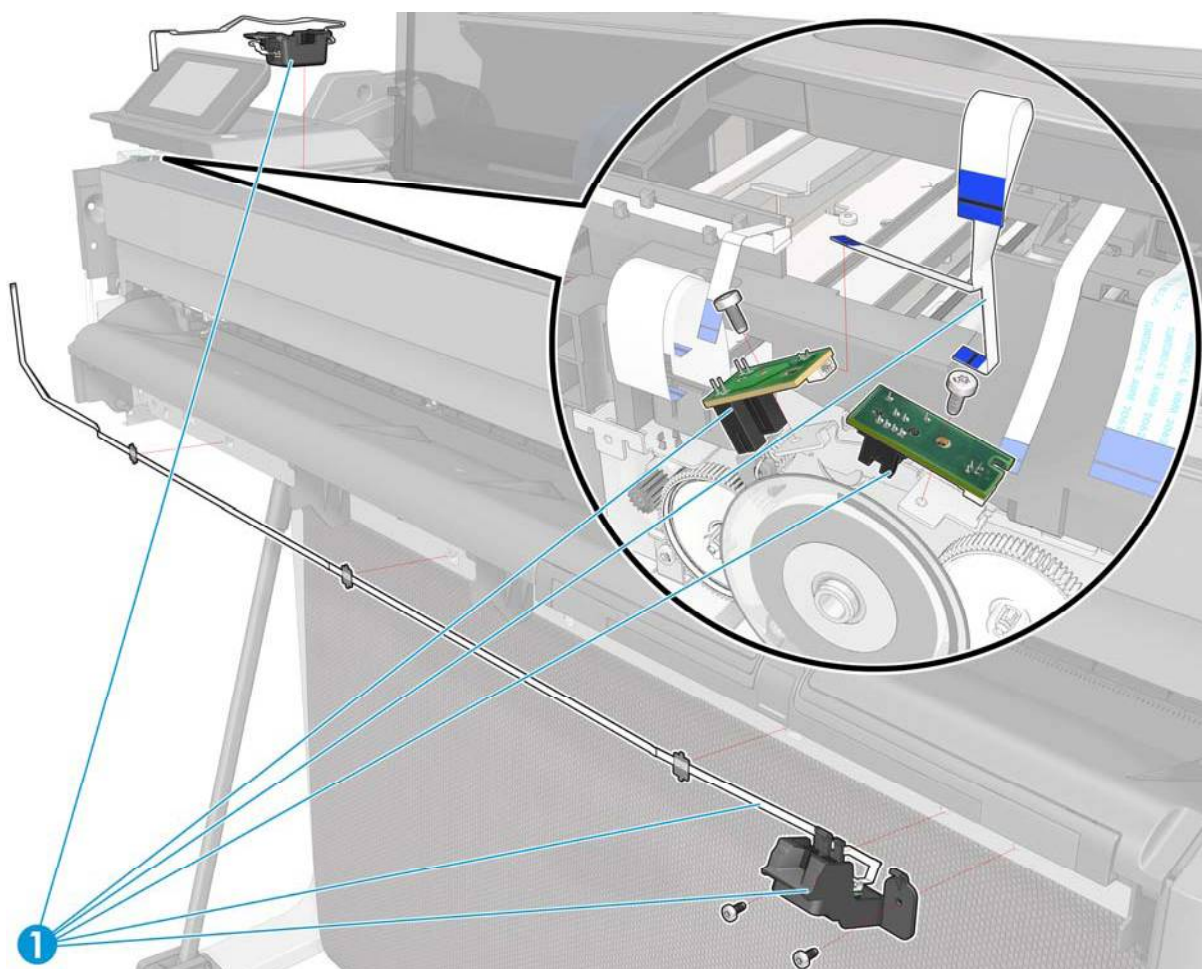
	HP part number	Part description	Removal and installation reference	Comments
1	CQ890-67043	Spindle module (24)		CSR A
	CQ893-67008	Spindle module (36)		
2	CQ893-67009	Spindle hubs		CSR A





# Sensor Kit

	HP part number	Part description	Removal and installation reference	Comments
			<a href="#">Encoder PCA and Index</a> on page 213 <a href="#">Output Tray Sensor Assembly</a> on page 286 <a href="#">Top Cover Sensor</a> on page 188	Includes Encoder PCA + Index + cable, Output Tray Sensor + cable, and Top Cover Sensor



## Miscellaneous parts

HP part number	Part description	Comments
CQ890-67021	Cables Service Kit	Includes FFC-Encoder-Rewind, FFC-Ink-Door, Pick Motor Encoder FFC, FFC-Control-Panel, FFC-Power Button, FFC - Paper-Feed-Sensors, Assy-FFC-Bundle-24, Assy-FFC-Bundle-36, Assy-FFC-OOPS, FFC-Top-Door, FFC-OUTPUTTRAYSENSOR-LEFT-24, FFC-OUTPUTTRAYSENSOR-LEFT-36
CQ890-67057	Labels Kit	CSR A. Includes ink supply label, serial label, nameplates, and ink supply labels.
	Lubrication Kit	
CQ891-60021	Power Cord: EU SV KIT	CSR A
		8120-6314 EU, Denmark, South Africa, Switzerland
		8120-8699 UK & Middle East
CQ891-60022	Power Cord: AMS SV KIT	CSR A
		8120-6313 US, Canada & Mexico
		8120-8367 Argentina
		8121-1081 Brazil
		8121-0514 Chile
CQ891-60023	Power Cord: APJ SV KIT	CSR A
		8120-8699 Singapore, HK, MY
		8121-1168 India
		8121-0664 Thailand & Philippines
		8120-6316 Japan
		8120-8373 China
		8121-0963 Taiwan
		8120-8441 Korea
		8120-6314 Indonesia & Vietnam
		8121-0870 Australia